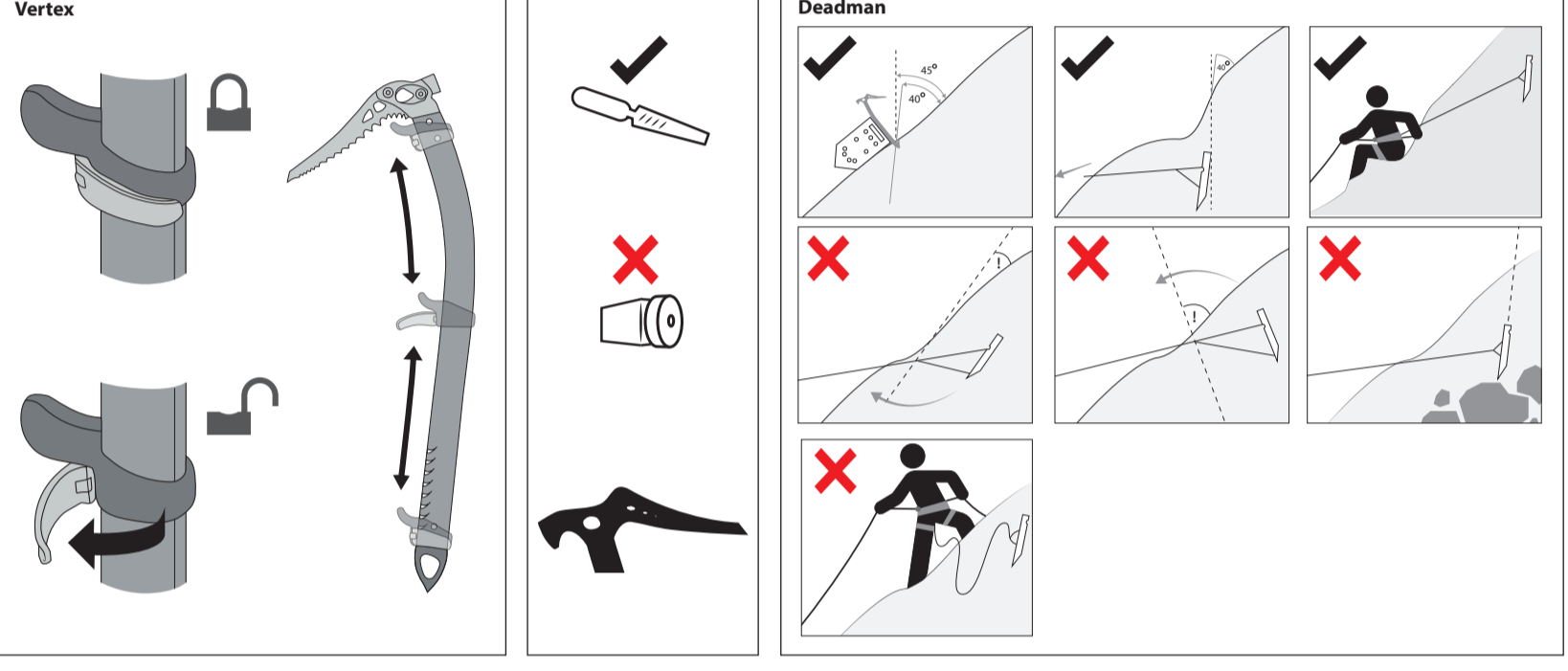


EN: Type 2 Ice-Tech/Pick for use on rock/snow/ice.
 FR: Type 2 Piolet/Lame pour une utilisation sur un rocher/ neige/glace.
 DE: Type 2 Eispickel / Klinge für den Einsatz in Fels/Schnee/Eis.
 IT: Tipo 2 Piccozza / Lama per l'uso su roccia/neve/ghiaccio
 ES: Tipo 2 Hielo av / Hacha for användning på berg / snö / is
 PT: Tipo 2 Machado de gelo / Lâmina para uso em rocha/neve/gelo
 NL: Type 2 Ijsbijl / Blad voor gebruik op rots/sneeuw/ijs
 NB: Type 2 Iks / Blad for bruk på stein / snø / is
 SV: Typ 2 Ispis / Haka for användning på berg / snö / is
 FI: Tyypin 2 Jää av / Terä kättyvätkästen kivillä / lumi / jää
 DA: Type 2 hokke / Klinge til brug på sten / sne / is
 PL: Typu 2 Czekan / Ostrze do stosowania na skały / śnieg / lod
 SK: Typ 2 Čepič / Čepiče pro použití na skále / sněhu / ledu



EN: Use DMM Grip Tape to customise and maintain the handle.
 FR: Utilisez DMM Grip Tape pour personnaliser et à maintenir la poignée.
 DE: Verwenden Sie DMM Grip Tape anpassen und pflegen Sie den Griff.
 IT: Utilizzare DMM Grip Tape per personalizzare e mantenere la maniglia.
 ES: Utilice DMM Grip Tape para personalizar y mantener el mango.
 PT: Use DMM Grip Tape para personalizar e manter o punho.
 NL: Gebruik DMM Grip Tape aanpassen en onderhouden van de handgreep.
 NB: Bruk DMM Grip Tape til å tilpasse og vedlikeholde håndtaket.
 SV: Använd DMM Grip Tape för att anpassa och underhålla handtaget.
 FI: Käytä DMM Grip Tappi muokata ja ylläpitää kahvaa.
 DA: Brug DMM Grip Tape for at tilpasse og vedligeholde håndtaget.
 PL: Użyj DMM Grip Tapy dostosować i utrzymywać uchwyt.
 SK: Pomocou DMM Grip Tapy prispôbiť a udržiavať rukoväť.
 EN: Prevent contact with chemical reagents.
 FR: Évitez les contacts avec des réactifs chimiques.
 DE: Vermeiden Sie den Kontakt mit chemischen Reagenzien.
 IT: Impedire il contatto con reagenti chimici.
 ES: Evite el contacto con activos químicos.
 PT: Evite o contacto com reagentes químicos.
 NL: Ver voorkom contact met chemische reagentia.
 NB: Unngå kontakt med kjemiske reagensmidler.
 SV: Undvik kontakt med kemiska reagensier.
 FI: Älä päästä kosketuksiin kemiallisten reagenssien kanssa.
 DA: Undgå kontakt med kemisk aktive stoffer.
 PL: Nie dopuszczaj do kontaktu z odczynnikami chemicznymi.
 SK: Nevyštvárajte psobnosti chemickým reaktívom.
 EN: Do not hit crampons with the handle.
 FR: Ne pas frapper avec la poignée crampons.
 DE: Nicht Stiegeisen mit dem Griff schlagen!
 IT: Non colpire ramponi con la maniglia!
 ES: No golpear con el mango crampones.
 PT: Não bata crampons com o punho.
 NL: Niet slaan met het handgreep.
 NB: Bruk DMM Grip Tape til å tilpasse og vedlikeholde håndtaket.
 SV: Använd DMM Grip Tape för att anpassa och underhålla handtaget.
 FI: Käytä DMM Grip Tappi muokata ja ylläpitää kahvaa.
 DA: Brug DMM Grip Tape for at tilpasse og vedligeholde håndtaget.
 PL: Użyj DMM Grip Tapy dostosować i utrzymywać uchwyt.
 SK: Pomocou DMM Grip Tapy prispôbiť a udržiavať rukoväť.

EN: PRIOR TO USING THE USER IS OBLIGED TO COMPLETE THE FOLLOWING INFORMATION - User's Name: Place of Purchase: Date of Purchase: Date of First Use.
 DE: VOR GEBRAUCH SIND VON ANWENDER FOLGENDE ANGABEN ZU MACHEN - Name des Anwenders: Kaufdatum: Datum der Ersten Benutzung.
 IT: PRIMA DELL'USO, L'UTENTE HA L'OBBLIGO DI COMPLETARE LE SEGUENTI INFORMAZIONI - Nome dell'utente: Luogo di acquisto: Data di acquisto: Data del primo utilizzo.
 ES: ANTES DEL USO, EL USUARIO ESTÁ OBLIGADO A COMPLETAR LA SIGUIENTE INFORMACIÓN - Nombre del usuario: Lugar de compra: Fecha de compra: Fecha del primer uso.
 PT: ANTES DO USO, O UTILIZADOR DEVE OBLIGADO A COMPLETAR A SIGUIENTE INFORMACIÓN - Nome do Utilizador: Local de Compra: Data da Compra: Data da Primeira Utilização.
 NL: VOOR GEBRUIK SIND VON ANWENDER FOLGENDE ANGABEN ZU MACHEN - Naam van de gebruiker: Koopt datum: Datum eerste gebruik.
 NB: BRUKEREN ER PLIKTET TIL Å OPPGI FØLGENDE INFORMASJON FOR BRUK - Navn på bruker: Kjøpsdato: Kjøpsdato: Dato for første bruk.
 SV: INNAN ANVÄNDNING MÅST ANVÄNDAREN FÖLJANDE INFORMATION - Användarens namn: Köpställe: Köpdatum: Dato för första användningen.
 FI: KÄYTTÄJÄN TULEE MÄÄRITÄ ENNEN KÄYTTÖÄ - Käyttäjän nimi: Ostopaikka: Ostopäivä: Päivä, jolloin varustusta on käytetty ensimmäisen kerran.
 DA: FØR BRUGNING, SKAL BRUGEREN SIKRE, AT FØLGENDE INFORMATION OVERHOLDES - Brugernes: Købsted: Købsdato: Dato for første anvendelse.
 PL: PRZED UŻYCIEM NARZĘDZIA NIEKORZYŻAJCIE INFORMACJE - Nazwisko użytkownika: Miejsce zakupu: Data zakupu: Data pierwszego użycia.
 SK: PRED POUŽITÍM MUSÍ UŽÍVATEĽ POUVIŤ NÁSLEDUJÚCE INFORMÁCIE - Meno používateľa: Miesto kúpy: Dátum kúpy: Dátum prvého použitia.

EN: Date of Contact
 FR: Date de contact
 DE: Datum des Kontakts
 IT: Data di contatto
 ES: Fecha de la información
 PT: Data de contacto
 NL: Datum van contact
 NB: Dato for kontakt
 SV: Dato för kontakt
 FI: Käytön alkamispäivä
 DA: Dato for kontakt
 PL: Data kontaktu
 SK: Dátum kontakty

EN: Inspection Form
 FR: Fiche d'inspection
 DE: Inspektionsformular
 IT: Modulo di ispezione
 ES: Hoja de inspección
 PT: Formulário de inspeção
 NL: Inspektieformulier
 NB: Inspektionskjortel
 SV: Inspektionsformulär
 FI: Tarkastuslomake
 DA: Inspektionskort
 PL: Formularz inspekcyjny
 SK: Formulár kontroly

EN: (Yes/No)
 FR: (Oui/Non)
 DE: (Ja/Nein)
 IT: (Sì/No)
 ES: (Sí/No)
 PT: (Sim/Não)
 NL: (Ja/Nee)
 NB: (Ja/Nei)
 SV: (Ja/Nej)
 FI: (Kyllä/Ei)
 DA: (Ja/Nej)
 PL: (Tak/Nie)
 SK: (Áno/Nej)

EN: Signature
 FR: Signature
 DE: Unterschrift
 IT: Firma
 ES: Firma
 PT: Assinatura
 NL: Handtekening
 NB: Signatur
 SV: Underskrift
 FI: Allekirje
 DA: Signatur
 PL: Podpis
 SK: Podpis

EN: Date of Contact
 FR: Date de contact
 DE: Datum des Kontakts
 IT: Data di contatto
 ES: Fecha de la información
 PT: Data de contacto
 NL: Datum van contact
 NB: Dato for kontakt
 SV: Dato för kontakt
 FI: Käytön alkamispäivä
 DA: Dato for kontakt
 PL: Data kontaktu
 SK: Dátum kontakty

Warning! Working at height, rock climbing, mountaineering and related activities are hazardous. It is the responsibility of the user to ensure that using this equipment to learn and practice the proper techniques and use of the equipment for its designed purposes safely and to foresee and take appropriate action in situations where rescue may be required. Earning the correct use of equipment and techniques may result in fatal consequences. Do not use this equipment in situations where rescue may be required. Earning the correct use of equipment and techniques may result in fatal consequences. Do not use this equipment in situations where rescue may be required. Earning the correct use of equipment and techniques may result in fatal consequences.
5. Des vies et/ou de la mort peuvent résulter de l'utilisation incorrecte de cet équipement. Ne pas utiliser cet équipement dans des situations où une aide d'urgence est nécessaire. Apprendre l'utilisation correcte de cet équipement et des techniques peut entraîner des conséquences fatales. Ne pas utiliser cet équipement dans des situations où une aide d'urgence est nécessaire. Apprendre l'utilisation correcte de cet équipement et des techniques peut entraîner des conséquences fatales. Ne pas utiliser cet équipement dans des situations où une aide d'urgence est nécessaire. Apprendre l'utilisation correcte de cet équipement et des techniques peut entraîner des conséquences fatales.
6. ATTENTION DANGER! En cas de doute sur l'état de ce produit effectuer immédiatement son remplacement.
7. Assurance de la vie: l'emploi de cet autre matériel utilisateur conjointement à ce produit. Il est recommandé à l'utilisateur de s'assurer qu'il/elle connaît parfaitement les instructions de ce produit et les techniques d'emploi. Les instructions et diagrammes illustrent certaines des méthodes communes correctes d'utilisation de cet équipement. Seul le fabricant peut garantir que cet équipement est conforme à son utilisation prévue. L'utilisateur doit être conscient que l'utilisation de cet équipement dans des situations où une aide d'urgence est nécessaire peut entraîner des conséquences fatales.
8. ATTENTION DANGER! En cas de doute sur l'état de ce produit effectuer immédiatement son remplacement.
9. DMM declina toute responsabilité à l'égard des dommages, blessures ou pertes résultant du mauvais emploi de son matériel. En cas de doute, contactez DMM.
10. Aucune précision spéciale de transport n'est requise. Enter cependant le type et les poids des produits réactifs ou autres substances corrosives.
11. Des précautions doivent être prises pour éviter le chargement de ce produit sur des objets susceptibles d'être obstrués. Vérifier l'orientation prévue pendant le chargement avant de l'utiliser.
12. Ancreage:
 12.1. Positionnement du point d'ancrage est crucial pour ancrature sûr et cela doit prendre en compte la distance de chute prévue, y compris tronçon de câble.
 12.2. Bergsteiger: Der Benutzer wird darauf hingewiesen, dass die Sicherheit eines Ankerpunktes, die Länge der Seile und die Qualität der Ankerpunkte von großer Bedeutung sind. Die Ankerpunkte müssen sicher und stabil sein. Die Ankerpunkte müssen sicher und stabil sein. Die Ankerpunkte müssen sicher und stabil sein.
 12.3. La sécurité d'un outil d'ancrage dans la glace doit être traitée avec une extrême prudence. Ce type d'ancrage ne doit être utilisé que si d'autres formes de protection sont disponibles.
 12.4. Ankerpunkte: Die Ankerpunkte müssen sicher und stabil sein. Die Ankerpunkte müssen sicher und stabil sein. Die Ankerpunkte müssen sicher und stabil sein.
 12.5. Ankerpunkte: Die Ankerpunkte müssen sicher und stabil sein. Die Ankerpunkte müssen sicher und stabil sein. Die Ankerpunkte müssen sicher und stabil sein.
 12.6. Ankerpunkte: Die Ankerpunkte müssen sicher und stabil sein. Die Ankerpunkte müssen sicher und stabil sein. Die Ankerpunkte müssen sicher und stabil sein.
 12.7. Ankerpunkte: Die Ankerpunkte müssen sicher und stabil sein. Die Ankerpunkte müssen sicher und stabil sein. Die Ankerpunkte müssen sicher und stabil sein.
 12.8. Ankerpunkte: Die Ankerpunkte müssen sicher und stabil sein. Die Ankerpunkte müssen sicher und stabil sein. Die Ankerpunkte müssen sicher und stabil sein.
 12.9. Ankerpunkte: Die Ankerpunkte müssen sicher und stabil sein. Die Ankerpunkte müssen sicher und stabil sein. Die Ankerpunkte müssen sicher und stabil sein.
 12.10. Ankerpunkte: Die Ankerpunkte müssen sicher und stabil sein. Die Ankerpunkte müssen sicher und stabil sein. Die Ankerpunkte müssen sicher und stabil sein.
 12.11. Ankerpunkte: Die Ankerpunkte müssen sicher und stabil sein. Die Ankerpunkte müssen sicher und stabil sein. Die Ankerpunkte müssen sicher und stabil sein.
 12.12. Ankerpunkte: Die Ankerpunkte müssen sicher und stabil sein. Die Ankerpunkte müssen sicher und stabil sein. Die Ankerpunkte müssen sicher und stabil sein.

13. Snow and Ice Climbing: General Information
 13.1. Snow and ice are changeable mediums. It is impossible to guarantee the safety of any equipment in snow and ice.
 13.2. The safety of any ice or snow anchor must be treated with extreme caution. This type of anchor must be used with extreme caution.
 13.3. The safety of any ice or snow anchor must be treated with extreme caution. This type of anchor must be used with extreme caution.
 13.4. The safety of any ice or snow anchor must be treated with extreme caution. This type of anchor must be used with extreme caution.
 13.5. The safety of any ice or snow anchor must be treated with extreme caution. This type of anchor must be used with extreme caution.
 13.6. The safety of any ice or snow anchor must be treated with extreme caution. This type of anchor must be used with extreme caution.
 13.7. The safety of any ice or snow anchor must be treated with extreme caution. This type of anchor must be used with extreme caution.
 13.8. The safety of any ice or snow anchor must be treated with extreme caution. This type of anchor must be used with extreme caution.
 13.9. The safety of any ice or snow anchor must be treated with extreme caution. This type of anchor must be used with extreme caution.
 13.10. The safety of any ice or snow anchor must be treated with extreme caution. This type of anchor must be used with extreme caution.
 13.11. The safety of any ice or snow anchor must be treated with extreme caution. This type of anchor must be used with extreme caution.
 13.12. The safety of any ice or snow anchor must be treated with extreme caution. This type of anchor must be used with extreme caution.
 13.13. The safety of any ice or snow anchor must be treated with extreme caution. This type of anchor must be used with extreme caution.
 13.14. The safety of any ice or snow anchor must be treated with extreme caution. This type of anchor must be used with extreme caution.
 13.15. The safety of any ice or snow anchor must be treated with extreme caution. This type of anchor must be used with extreme caution.
 13.16. The safety of any ice or snow anchor must be treated with extreme caution. This type of anchor must be used with extreme caution.
 13.17. The safety of any ice or snow anchor must be treated with extreme caution. This type of anchor must be used with extreme caution.
 13.18. The safety of any ice or snow anchor must be treated with extreme caution. This type of anchor must be used with extreme caution.
 13.19. The safety of any ice or snow anchor must be treated with extreme caution. This type of anchor must be used with extreme caution.
 13.20. The safety of any ice or snow anchor must be treated with extreme caution. This type of anchor must be used with extreme caution.
 13.21. The safety of any ice or snow anchor must be treated with extreme caution. This type of anchor must be used with extreme caution.
 13.22. The safety of any ice or snow anchor must be treated with extreme caution. This type of anchor must be used with extreme caution.
 13.23. The safety of any ice or snow anchor must be treated with extreme caution. This type of anchor must be used with extreme caution.
 13.24. The safety of any ice or snow anchor must be treated with extreme caution. This type of anchor must be used with extreme caution.
 13.25. The safety of any ice or snow anchor must be treated with extreme caution. This type of anchor must be used with extreme caution.
 13.26. The safety of any ice or snow anchor must be treated with extreme caution. This type of anchor must be used with extreme caution.
 13.27. The safety of any ice or snow anchor must be treated with extreme caution. This type of anchor must be used with extreme caution.
 13.28. The safety of any ice or snow anchor must be treated with extreme caution. This type of anchor must be used with extreme caution.
 13.29. The safety of any ice or snow anchor must be treated with extreme caution. This type of anchor must be used with extreme caution.
 13.30. The safety of any ice or snow anchor must be treated with extreme caution. This type of anchor must be used with extreme caution.
 13.31. The safety of any ice or snow anchor must be treated with extreme caution. This type of anchor must be used with extreme caution.
 13.32. The safety of any ice or snow anchor must be treated with extreme caution. This type of anchor must be used with extreme caution.
 13.33. The safety of any ice or snow anchor must be treated with extreme caution. This type of anchor must be used with extreme caution.
 13.34. The safety of any ice or snow anchor must be treated with extreme caution. This type of anchor must be used with extreme caution.
 13.35. The safety of any ice or snow anchor must be treated with extreme caution. This type of anchor must be used with extreme caution.
 13.36. The safety of any ice or snow anchor must be treated with extreme caution. This type of anchor must be used with extreme caution.
 13.37. The safety of any ice or snow anchor must be treated with extreme caution. This type of anchor must be used with extreme caution.
 13.38. The safety of any ice or snow anchor must be treated with extreme caution. This type of anchor must be used with extreme caution.
 13.39. The safety of any ice or snow anchor must be treated with extreme caution. This type of anchor must be used with extreme caution.
 13.40. The safety of any ice or snow anchor must be treated with extreme caution. This type of anchor must be used with extreme caution.
 13.41. The safety of any ice or snow anchor must be treated with extreme caution. This type of anchor must be used with extreme caution.
 13.42. The safety of any ice or snow anchor must be treated with extreme caution. This type of anchor must be used with extreme caution.
 13.43. The safety of any ice or snow anchor must be treated with extreme caution. This type of anchor must be used with extreme caution.
 13.44. The safety of any ice or snow anchor must be treated with extreme caution. This type of anchor must be used with extreme caution.
 13.45. The safety of any ice or snow anchor must be treated with extreme caution. This type of anchor must be used with extreme caution.
 13.46. The safety of any ice or snow anchor must be treated with extreme caution. This type of anchor must be used with extreme caution.
 13.47. The safety of any ice or snow anchor must be treated with extreme caution. This type of anchor must be used with extreme caution.
 13.48. The safety of any ice or snow anchor must be treated with extreme caution. This type of anchor must be used with extreme caution.
 13.49. The safety of any ice or snow anchor must be treated with extreme caution. This type of anchor must be used with extreme caution.
 13.50. The safety of any ice or snow anchor must be treated with extreme caution. This type of anchor must be used with extreme caution.
 13.51. The safety of any ice or snow anchor must be treated with extreme caution. This type of anchor must be used with extreme caution.
 13.52. The safety of any ice or snow anchor must be treated with extreme caution. This type of anchor must be used with extreme caution.
 13.53. The safety of any ice or snow anchor must be treated with extreme caution. This type of anchor must be used with extreme caution.
 13.54. The safety of any ice or snow anchor must be treated with extreme caution. This type of anchor must be used with extreme caution.
 13.55. The safety of any ice or snow anchor must be treated with extreme caution. This type of anchor must be used with extreme caution.
 13.56. The safety of any ice or snow anchor must be treated with extreme caution. This type of anchor must be used with extreme caution.
 13.57. The safety of any ice or snow anchor must be treated with extreme caution. This type of anchor must be used with extreme caution.
 13.58. The safety of any ice or snow anchor must be treated with extreme caution. This type of anchor must be used with extreme caution.
 13.59. The safety of any ice or snow anchor must be treated with extreme caution. This type of anchor must be used with extreme caution.
 13.60. The safety of any ice or snow anchor must be treated with extreme caution. This type of anchor must be used with extreme caution.
 13.61. The safety of any ice or snow anchor must be treated with extreme caution. This type of anchor must be used with extreme caution.
 13.62. The safety of any ice or snow anchor must be treated with extreme caution. This type of anchor must be used with extreme caution.
 13.63. The safety of any ice or snow anchor must be treated with extreme caution. This type of anchor must be used with extreme caution.
 13.64. The safety of any ice or snow anchor must be treated with extreme caution. This type of anchor must be used with extreme caution.
 13.65. The safety of any ice or snow anchor must be treated with extreme caution. This type of anchor must be used with extreme caution.
 13.66. The safety of any ice or snow anchor must be treated with extreme caution. This type of anchor must be used with extreme caution.
 13.67. The safety of any ice or snow anchor must be treated with extreme caution. This type of anchor must be used with extreme caution.
 13.68. The safety of any ice or snow anchor must be treated with extreme caution. This type of anchor must be used with extreme caution.
 13.69. The safety of any ice or snow anchor must be treated with extreme caution. This type of anchor must be used with extreme caution.
 13.70. The safety of any ice or snow anchor must be treated with extreme caution. This type of anchor must be used with extreme caution.
 13.71. The safety of any ice or snow anchor must be treated with extreme caution. This type of anchor must be used with extreme caution.
 13.72. The safety of any ice or snow anchor must be treated with extreme caution. This type of anchor must be used with extreme caution.
 13.73. The safety of any ice or snow anchor must be treated with extreme caution. This type of anchor must be used with extreme caution.
 13.74. The safety of any ice or snow anchor must be treated with extreme caution. This type of anchor must be used with extreme caution.
 13.75. The safety of any ice or snow anchor must be treated with extreme caution. This type of anchor must be used with extreme caution.
 13.76. The safety of any ice or snow anchor must be treated with extreme caution. This type of anchor must be used with extreme caution.
 13.77. The safety of any ice or snow anchor must be treated with extreme caution. This type of anchor must be used with extreme caution.
 13.78. The safety of any ice or snow anchor must be treated with extreme caution. This type of anchor must be used with extreme caution.
 13.79. The safety of any ice or snow anchor must be treated with extreme caution. This type of anchor must be used with extreme caution.
 13.80. The safety of any ice or snow anchor must be treated with extreme caution. This type of anchor must be used with extreme caution.
 13.81. The safety of any ice or snow anchor must be treated with extreme caution. This type of anchor must be used with extreme caution.
 13.82. The safety of any ice or snow anchor must be treated with extreme caution. This type of anchor must be used with extreme caution.
 13.83. The safety of any ice or snow anchor must be treated with extreme caution. This type of anchor must be used with extreme caution.
 13.84. The safety of any ice or snow anchor must be treated with extreme caution. This type of anchor must be used with extreme caution.
 13.85. The safety of any ice or snow anchor must be treated with extreme caution. This type of anchor must be used with extreme caution.
 13.86. The safety of any ice or snow anchor must be treated with extreme caution. This type of anchor must be used with extreme caution.
 13.87. The safety of any ice or snow anchor must be treated with extreme caution. This type of anchor must be used with extreme caution.
 13.88. The safety of any ice or snow anchor must be treated with extreme caution. This type of anchor must be used with extreme caution.
 13.89. The safety of any ice or snow anchor must be treated with extreme caution. This type of anchor must be used with extreme caution.
 13.90. The safety of any ice or snow anchor must be treated with extreme caution. This type of anchor must be used with extreme caution.
 13.91. The safety of any ice or snow anchor must be treated with extreme caution. This type of anchor must be used with extreme caution.
 13.92. The safety of any ice or snow anchor must be treated with extreme caution. This type of anchor must be used with extreme caution.
 13.93. The safety of any ice or snow anchor must be treated with extreme caution. This type of anchor must be used with extreme caution.
 13.94. The safety of any ice or snow anchor must be treated with extreme caution. This type of anchor must be used with extreme caution.
 13.95. The safety of any ice or snow anchor must be treated with extreme caution. This type of anchor must be used with extreme caution.
 13.96. The safety of any ice or snow anchor must be treated with extreme caution. This type of anchor must be used with extreme caution.
 13.97. The safety of any ice or snow anchor must be treated with extreme caution. This type of anchor must be used with extreme caution.
 13.98. The safety of any ice or snow anchor must be treated with extreme caution. This type of anchor must be used with extreme caution.
 13.99. The safety of any ice or snow anchor must be treated with extreme caution. This type of anchor must be used with extreme caution.
 14.00. The safety of any ice or snow anchor must be treated with extreme caution. This type of anchor must be used with extreme caution.

14. Specific User Information (Deadman) See diagrams
 14.1. WARNING: A knowledge of local avalanche conditions and snow slope is essential for safe use.
 14.2. The security of the Deadman anchor is completely dependent on the type and nature of the snow it is placed in, the correct placement and orientation of the Deadman, and the skill and experience of the user.
 14.3. WARNING: The security of any snow (or ice) anchor must be treated with extreme caution. This type of anchor must be used with extreme caution.
 14.4. The security of any snow (or ice) anchor must be treated with extreme caution. This type of anchor must be used with extreme caution.
 14.5. The security of any snow (or ice) anchor must be treated with extreme caution. This type of anchor must be used with extreme caution.
 14.6. The security of any snow (or ice) anchor must be treated with extreme caution. This type of anchor must be used with extreme caution.
 14.7. The security of any snow (or ice) anchor must be treated with extreme caution. This type of anchor must be used with extreme caution.
 14.8. The security of any snow (or ice) anchor must be treated with extreme caution. This type of anchor must be used with extreme caution.
 14.9. The security of any snow (or ice) anchor must be treated with extreme caution. This type of anchor must be used with extreme caution.
 14.10. The security of any snow (or ice) anchor must be treated with extreme caution. This type of anchor must be used with extreme caution.
 14.11. The security of any snow (or ice) anchor must be treated with extreme caution. This type of anchor must be used with extreme caution.
 14.12. The security of any snow (or ice) anchor must be treated with extreme caution. This type of anchor must be used with extreme caution.
 14.13. The security of any snow (or ice) anchor must be treated with extreme caution. This type of anchor must be used with extreme caution.
 14.14. The security of any snow (or ice) anchor must be treated with extreme caution. This type of anchor must be used with extreme caution.
 14.15. The security of any snow (or ice) anchor must be treated with extreme caution. This type of anchor must be used with extreme caution.
 14.16. The security of any snow (or ice) anchor must be treated with extreme caution. This type of anchor must be used with extreme caution.
 14.17. The security of any snow (or ice) anchor must be treated with extreme caution. This type of anchor must be used with extreme caution.
 14.18. The security of any snow (or ice) anchor must be treated with extreme caution. This type of anchor must be used with extreme caution.
 14.19. The security of any snow (or ice) anchor must be treated with extreme caution. This type of anchor must be used with extreme caution.
 14.20. The security of any snow (or ice) anchor must be treated with extreme caution. This type of anchor must be used with extreme caution.
 14.21. The security of any snow (or ice) anchor must be treated with extreme caution. This type of anchor must be used with extreme caution.
 14.22. The security of any snow (or ice) anchor must be treated with extreme caution. This type of anchor must be used with extreme caution.
 14.23. The security of any snow (or ice) anchor must be treated with extreme caution. This type of anchor must be used with extreme caution.
 14.24. The security of any snow (or ice) anchor must be treated with extreme caution. This type of anchor must be used with extreme caution.
 14.25. The security of any snow (or ice) anchor must be treated with extreme caution. This type of anchor must be used with extreme caution.
 14.26. The security of any snow (or ice) anchor must be treated with extreme caution. This type of anchor must be used with extreme caution.
 14.27. The security of any snow (or ice) anchor must be treated with extreme caution. This type of anchor must be used with extreme caution.
 14.28. The security of any snow (or ice) anchor must be treated with extreme caution. This type of anchor must be used with extreme caution.
 14.29. The security of any snow (or ice) anchor must be treated with extreme caution. This type of anchor must be used with extreme caution.
 14.30. The security of any snow (or ice) anchor must be treated with extreme caution. This type of anchor must be used with extreme caution.
 14.31. The security of any snow (or ice) anchor must be treated with extreme caution. This type of anchor must be used with extreme caution.
 14.32. The security of any snow (or ice) anchor must be treated with extreme caution. This type of anchor must be used with extreme caution.
 14.33. The security of any snow (or ice) anchor must be treated with extreme caution. This type of anchor must be used with extreme caution.
 14.34. The security of any snow (or ice) anchor must be treated with extreme caution. This type of anchor must be used with extreme caution.
 14.35. The security of any snow (or ice) anchor must be treated with extreme caution. This type of anchor must be used with extreme caution.
 14.36. The security of any snow (or ice) anchor must be treated with extreme caution. This type of anchor must be used with extreme caution.
 14.37. The security of any snow (or ice) anchor must be treated with extreme caution. This type of anchor must be used with extreme caution.
 14.38. The security of any snow (or ice) anchor must be treated with extreme caution. This type of anchor must be used with extreme caution.
 14.39. The security of any snow (or ice) anchor must be treated with extreme caution. This type of anchor must be used with extreme caution.
 14.40. The security of any snow (or ice) anchor must be treated with extreme caution. This type of anchor must be used with extreme caution.
 14.41. The security of any snow (or ice) anchor must be treated with extreme caution. This type of anchor must be used with extreme caution.
 14.42. The security of any snow (or ice) anchor must be treated with extreme caution. This type of anchor must be used with extreme caution.
 14.43. The security of any snow (or ice) anchor must be treated with extreme caution. This type of anchor must be used with extreme caution.
 14.44. The security of any snow (or ice) anchor must be treated with extreme caution. This type of anchor must be used with extreme caution.
 14.45. The security of any snow (or ice) anchor must be treated with extreme caution. This type of anchor must be used with extreme caution.
 14.46. The security of any snow (or ice) anchor must be treated with extreme caution. This type of anchor must be used with extreme caution.
 14.47. The security of any snow (or ice) anchor must be treated with extreme caution. This type of anchor must be used with extreme caution.
 14.48. The security of any snow (or ice) anchor must be treated with extreme caution. This type of anchor must be used with extreme caution.
 14.49. The security of any snow (or ice) anchor must be treated with extreme caution. This type of anchor must be used with extreme caution.
 14.50. The security of any snow (or ice) anchor must be treated with extreme caution. This type of anchor must be used with extreme caution.
 14.51. The security of any snow (or ice) anchor must be treated with extreme caution. This type of anchor must be used with extreme caution.
 14.52. The security of any snow (or ice) anchor must be treated with extreme caution. This type of anchor must be used with extreme caution.
 14.53. The security of any snow (or ice) anchor must be treated with extreme caution. This type of anchor must be used with extreme caution.
 14.54. The security of any snow (or ice) anchor must be treated with extreme caution. This type of anchor must be used with extreme caution.
 14.55. The security of any snow (or ice) anchor must be treated with extreme caution. This type of anchor must be used with extreme caution.
 14.56. The security of any snow (or ice) anchor must be treated with extreme caution. This type of anchor must be used with extreme caution.
 14.57. The security of any snow (or ice) anchor must be treated with extreme caution. This type of anchor must be used with extreme caution.
 14.58. The security of any snow (or ice) anchor must be treated with extreme caution. This type of anchor must be used with extreme caution.
 14.59. The security of any snow (or ice) anchor must be treated with extreme caution. This type of anchor must be used with extreme caution.
 14.60. The security of any snow (or ice) anchor must be treated with extreme caution. This type of anchor must be used with extreme caution.
 14.61. The security of any snow (or ice) anchor must be treated with extreme caution. This type of anchor must be used with extreme caution.
 14.62. The security of any snow (or ice) anchor must be treated with extreme caution. This type of anchor must be used with extreme caution.
 14.63. The security of any snow (or ice) anchor must be treated with extreme caution. This type of anchor must be used with extreme caution.
 14.64. The security of any snow (or ice) anchor must be treated with extreme caution. This type of anchor must be used with extreme caution.
 14.65. The security of any snow (or ice) anchor must be treated with extreme caution. This type of anchor must be used with extreme caution.
 14.66. The security of any snow (or ice) anchor must be treated with extreme caution. This type of anchor must be used with extreme caution.
 14.67. The security of any snow (or ice) anchor must be treated with extreme caution. This type of anchor must be used with extreme caution.
 14.68. The security of any snow (or ice) anchor must be treated with extreme caution. This type of anchor must be used with extreme caution.
 14.69. The security of any snow (or ice) anchor must be treated with extreme caution. This type of anchor must be used with extreme caution.
 14.70. The security of any snow (or ice) anchor must be treated with extreme caution. This type of anchor must be used with extreme caution.
 14.71. The security of any snow (or ice) anchor must be treated with extreme caution. This type of anchor must be used with extreme caution.
 14.72. The security of any snow (or ice) anchor must be treated with extreme caution. This type of anchor must be used with extreme caution.
 14.73. The security of any snow (or ice) anchor must be treated with extreme caution. This type of anchor must be used with extreme caution.
 14.74. The security of any snow (or ice) anchor must be treated with extreme caution. This type of anchor must be used with extreme caution.
 14.75. The security of any snow (or ice) anchor must be treated with extreme caution. This type of anchor must be used with extreme caution.
 14.76. The security of any snow (or ice) anchor must be treated with extreme caution. This type of anchor must be used with extreme caution.
 14.77. The security of any snow (or ice) anchor must be treated with extreme caution. This type of anchor must be used with extreme caution.
 14.78. The security of any snow (or ice) anchor must be treated with extreme caution. This type of anchor must be used with extreme caution.
 14.79. The security of any snow (or ice) anchor must be treated with extreme caution. This type of anchor must be used with extreme caution.
 14.80. The security of any snow (or ice) anchor must be treated with extreme caution. This type of anchor must be used with extreme caution.
 14.81. The security of any snow (or ice) anchor must be treated with extreme caution. This type of anchor must be used with extreme caution.
 14.82. The security of any snow (or ice) anchor must be treated with extreme caution. This type of anchor must be used with extreme caution.
 14.83. The security of any snow (or ice) anchor must be treated with extreme caution. This type of anchor must be used with extreme caution.
 14.84. The security of any snow (or ice) anchor must be treated with extreme caution. This type of anchor must be used with extreme caution.
 14.85. The security of any snow (or ice) anchor must be treated with extreme caution. This type of anchor must be used with extreme caution.
 14.86. The security of any snow (or ice) anchor must be treated with extreme caution. This type of anchor must be used with extreme caution.
 14.87. The security of any snow (or ice) anchor must be treated with extreme caution. This type of anchor must be used with extreme caution.
 14.88. The security of any snow (or ice) anchor must be treated with extreme caution. This type of anchor must be used with extreme caution.
 14.89. The security of any snow (or ice) anchor must be treated with extreme caution. This type of anchor must be used with extreme caution.
 14.90. The security of any snow (or ice) anchor must be treated with extreme caution. This type of anchor must be used with extreme caution.
 14.91. The security of any snow (or ice) anchor must be treated with extreme caution. This type of anchor must be used with extreme caution.
 14.92. The security of any snow (or ice) anchor must be treated with extreme caution. This type of anchor must be used with extreme caution.
 14.93. The security of any snow (or ice) anchor must be treated with extreme caution. This type of anchor must be used with extreme caution.
 14.94. The security of any snow (or ice) anchor must be treated with extreme caution. This type of anchor must be used with extreme caution.
 14.95. The security of any snow (or ice) anchor must be treated with extreme caution. This type of anchor must be used with extreme caution.
 14.96. The security of any snow (or ice) anchor must be treated with extreme caution. This type of anchor must be used with extreme caution.
 14.97. The security of any snow (or ice) anchor must be treated with extreme caution. This type of anchor must be used with extreme caution.
 14.98. The security of any snow (or ice) anchor must be treated with extreme caution. This type of anchor must be used with extreme caution.
 14.99. The security of any snow (or ice) anchor must be treated with extreme caution. This type of anchor must be used with extreme caution.
 15.00. The security of any snow (or ice) anchor must be treated with extreme caution. This type of anchor must be used with extreme caution.

15. Specific User Information (Bulldog and Terrier) See diagrams
 15.1. The Bulldog/Terrier is not provided the level of security required for main line use.
 15.2. The Bulldog/Terrier is designed as a fast but marginal method of protection and should only be used when no other method of protection is available or possible.
 15.3. The Bulldog/Terrier is designed as a fast but marginal method of protection and should only be used when no other method of protection is available or possible.
 15.4. The Bulldog/Terrier is designed as a fast but marginal method of protection and should only be used when no other method of protection is available or possible.
 15.5. The Bulldog/Terrier is designed as a fast but marginal method of protection and should only be used when no other method of protection is available or possible.
 15.6. The Bulldog/Terrier is designed as a fast but marginal method of protection and should only be used when no other method of protection is available or possible.
 15.7. The Bulldog/Terrier is designed as a fast but marginal method of protection and should only be used when no other method of protection is available or possible.
 15.8. The Bulldog/Terrier is designed as a fast but marginal method of protection and should only be used when no other method of protection is available or possible.
 15.9. The Bulldog/Terrier is designed as a fast but marginal method of protection and should only be used when no other method of protection is available or possible.
 15.10. The Bulldog/Terrier is designed as a fast but marginal method of protection and should only be used when no other method of protection is available or possible.
 15.11. The Bulldog/Terrier is designed as a fast but marginal method of protection and should only be used when no other method of protection is available or possible.
 15.12. The Bulldog/Terrier is designed as a fast but marginal method of protection and should only be used when no other method of protection is available or possible.
 15.13. The Bulldog/Terrier is designed as a fast but marginal method of protection and should only be used when no other method of protection is available or possible.
 15.14. The Bulldog/Terrier is designed as a fast but marginal method of protection and should only be used when no other method of protection is available or possible.
 15.15. The Bulldog/Terrier is designed as a fast but marginal method of protection and should only be used when no other method of protection is available or possible.
 15.16. The Bulldog/Terrier is designed as a fast but marginal method of protection and should only be used when no other method of protection is

